

Setup Instructions

About PunchLight

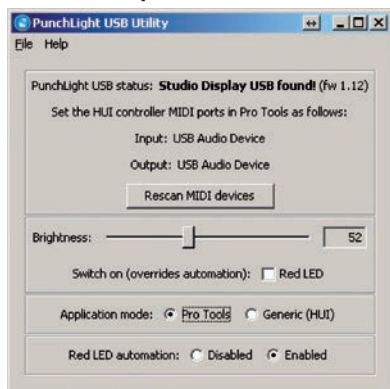
The Studio Display USB is designed for anybody working in project, dubbing, or post production studios who needs visual confirmation and timecode for when a recording begins or ends. This simple, precise and easy to use device is perfect for musicians and sound engineers as well as film, tv and video editors. The device has its own visual signalling system as well as an ability to control any signalling systems already installed in the studio. It is easy to install in any studio environment.

The Studio Display USB indicates timecode, bars/beats, time, samples and recording start/stop. The product signals "Recording" by glowing red LED. The unit is powered directly from USB. No PSU or Midi Interface is needed !

Hardware Setup

1. Connect the unit to a USB port on your computer using a USB cable.

Software Setup



punchlight software utility

1. Download and run the software utility (download from www.punchlight.com/download)
2. Setup the SD-USB as a Mackie HUI controller in your host application (Pro Tools, Logic Pro, Nuendo etc). Please refer to the host application's user manual. Use the input and output ports as displayed in the utility window.
4. Set your preferred brightness level.
5. "Switch on" Red LED (Overrides automation). The Red LED will light continuously, and will ignore incoming information about recording.
6. The Default Application mode is set to "Pro Tools". "Generic (HUI)" lets the display work with applications such as Nuendo, Cubase, Logic Pro, Digital Performer or Samplitude. This is choosing the communications protocol.
7. Red LED automation - you can turn off the red LED (Disabled) and automation will be ignored.

Technical specification

One device per one USB port

Voltage: 5V DC (USB)

Max Current: max. 500mA

Weight: 0,3kg (including 5 m cable)